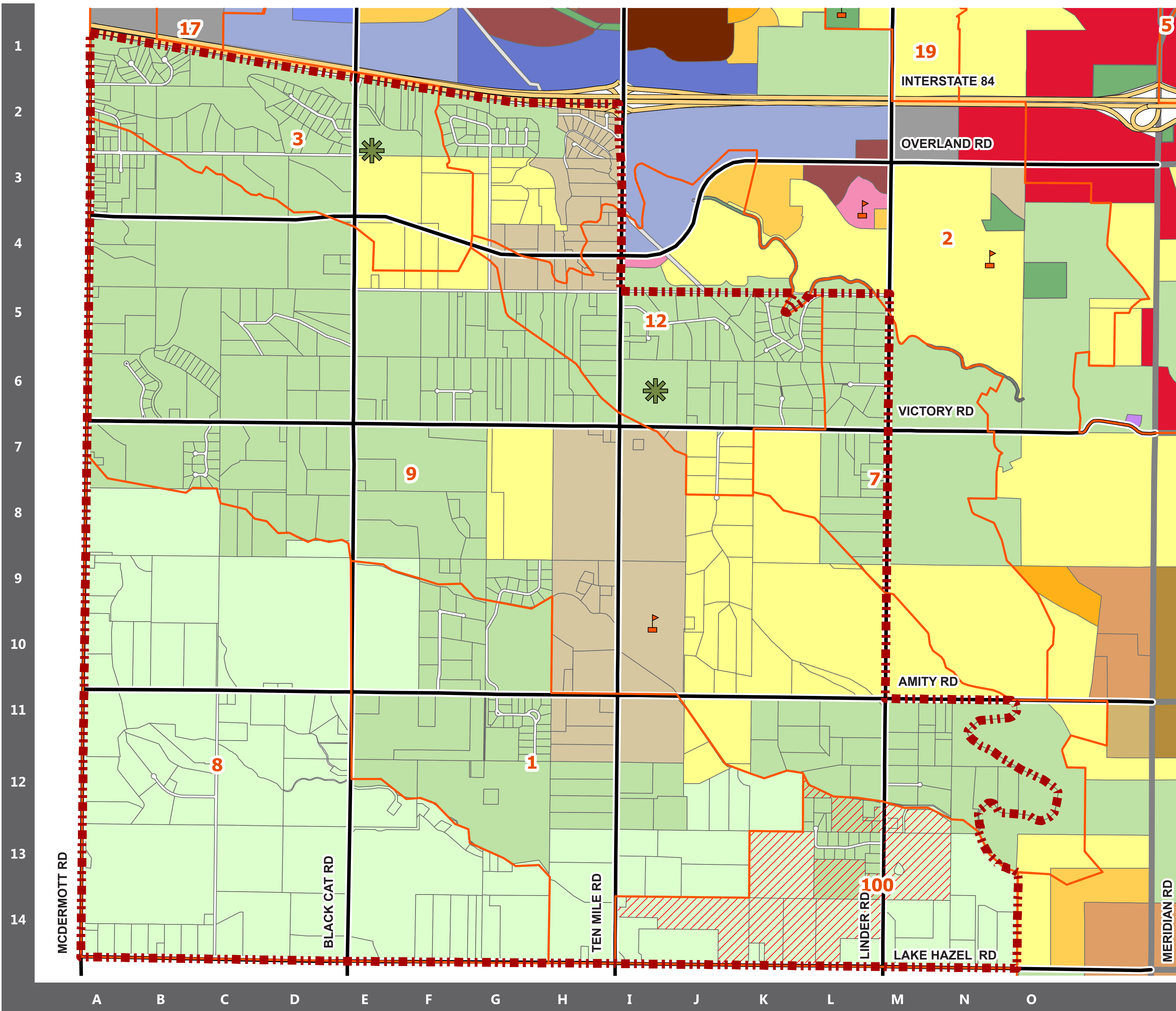


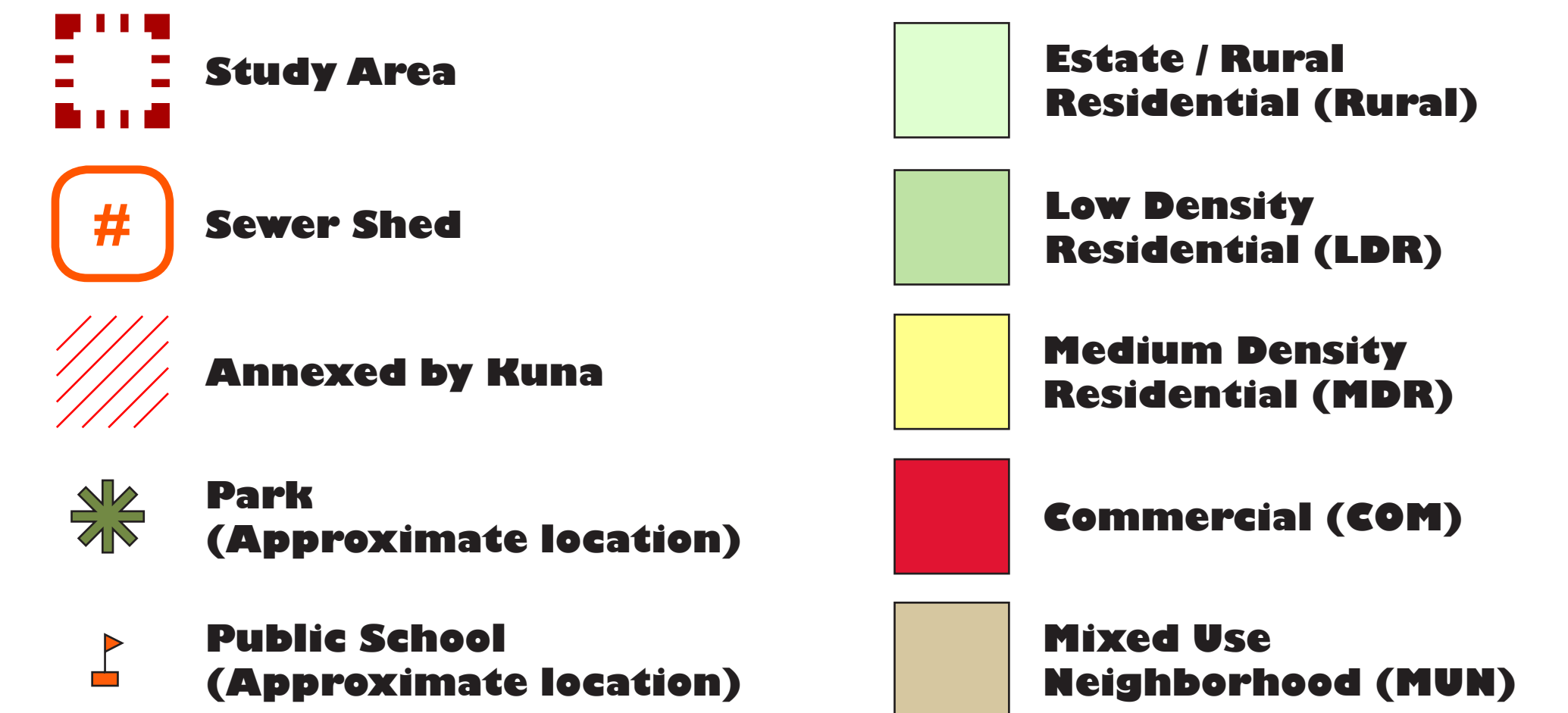
LAND USE SCENARIO – Refined PAG (5/29/2012)

» FUTURE LAND USE MAP

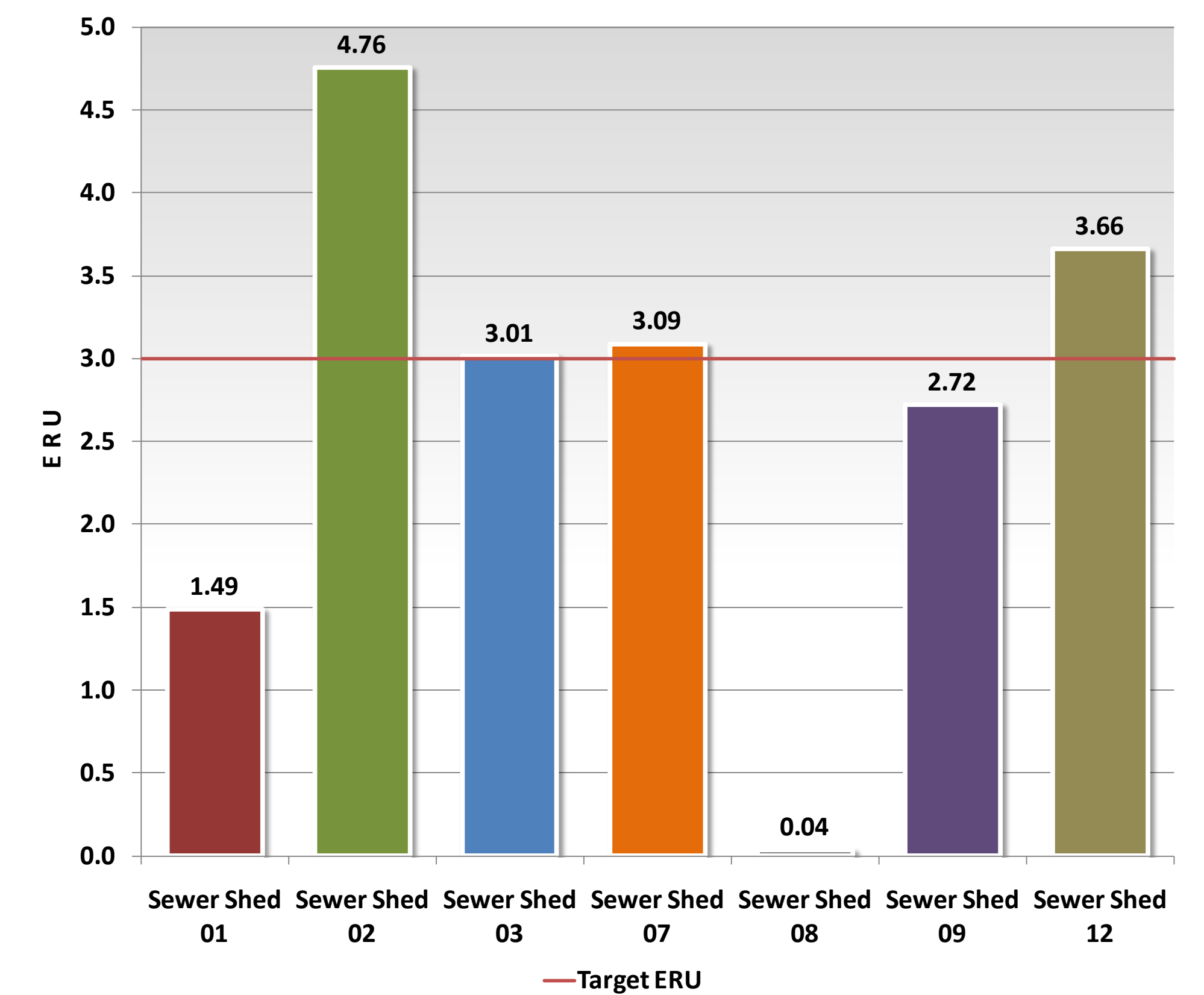
» LEGEND



» STUDY AREA SYMBOLS



» SEWER SHED ERU AVERAGES (EQUIVALENT RESIDENTIAL UNIT)

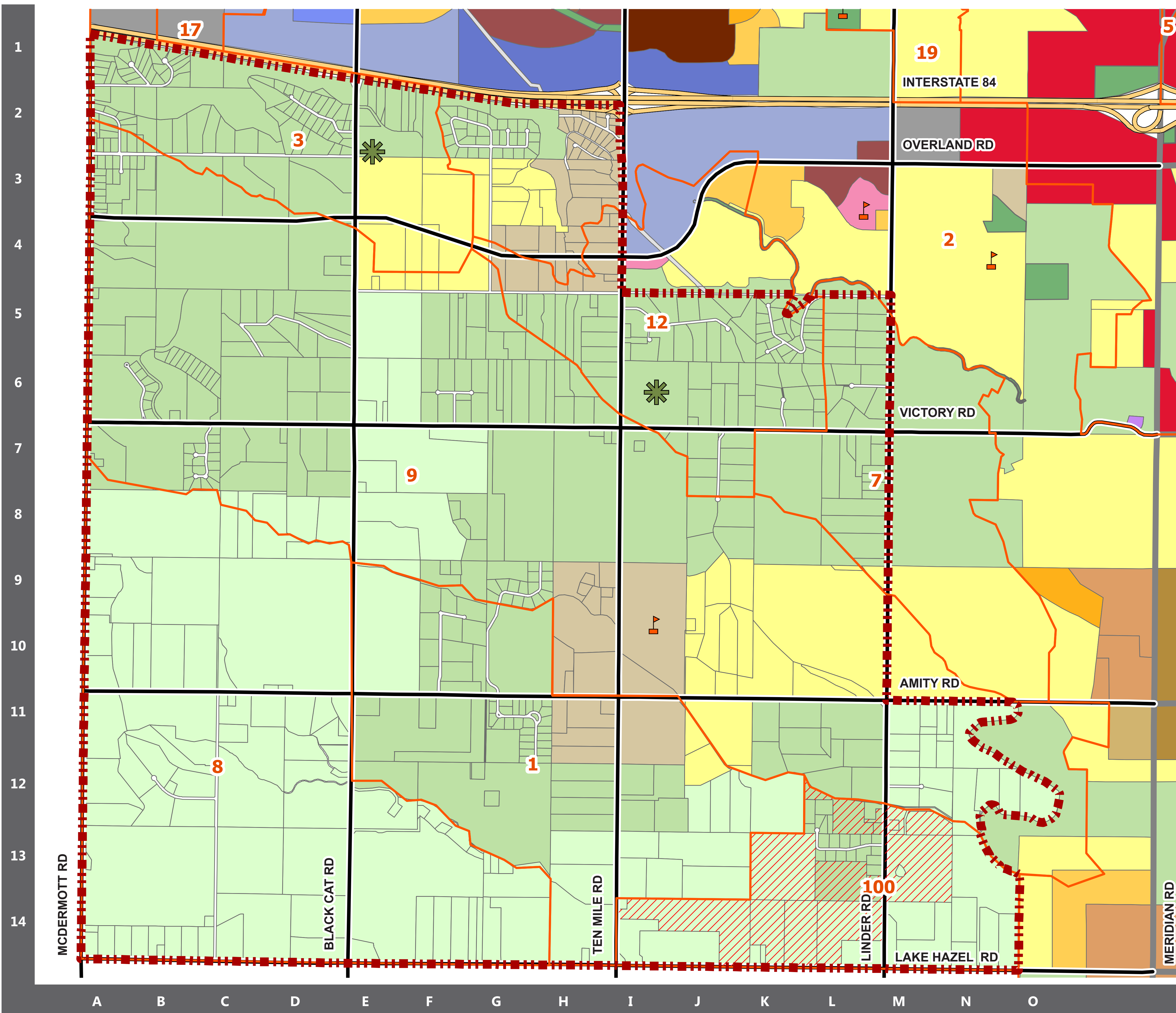


Notes: The target ERU is the desired density average of residential and commercial development to make installation and maintenance of sewer infrastructure cost effective. Sewer shed 100 is not shown because the majority of this area has already been annexed by the City of Kuna.

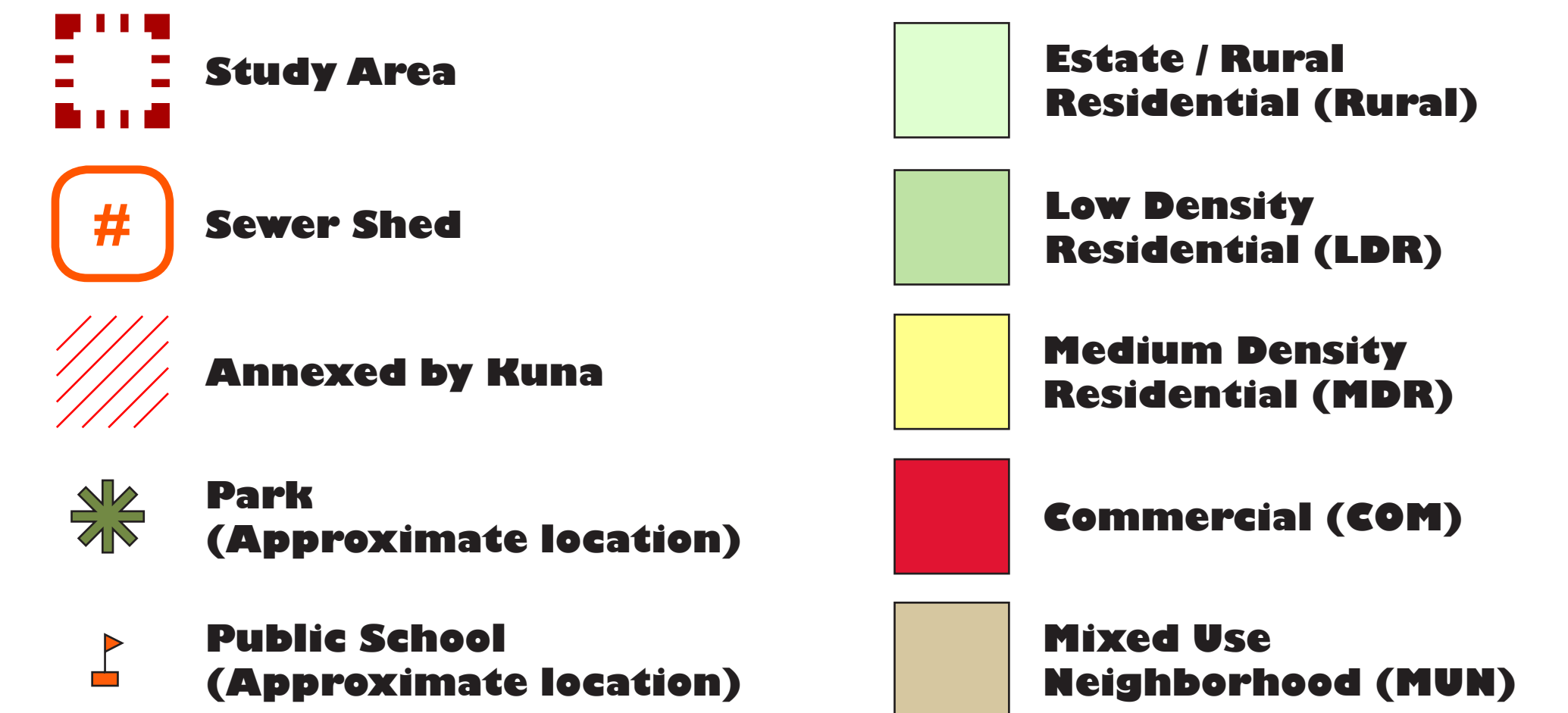
LAND USE SCENARIO – Original PAG (4/3/2012)

» FUTURE LAND USE MAP

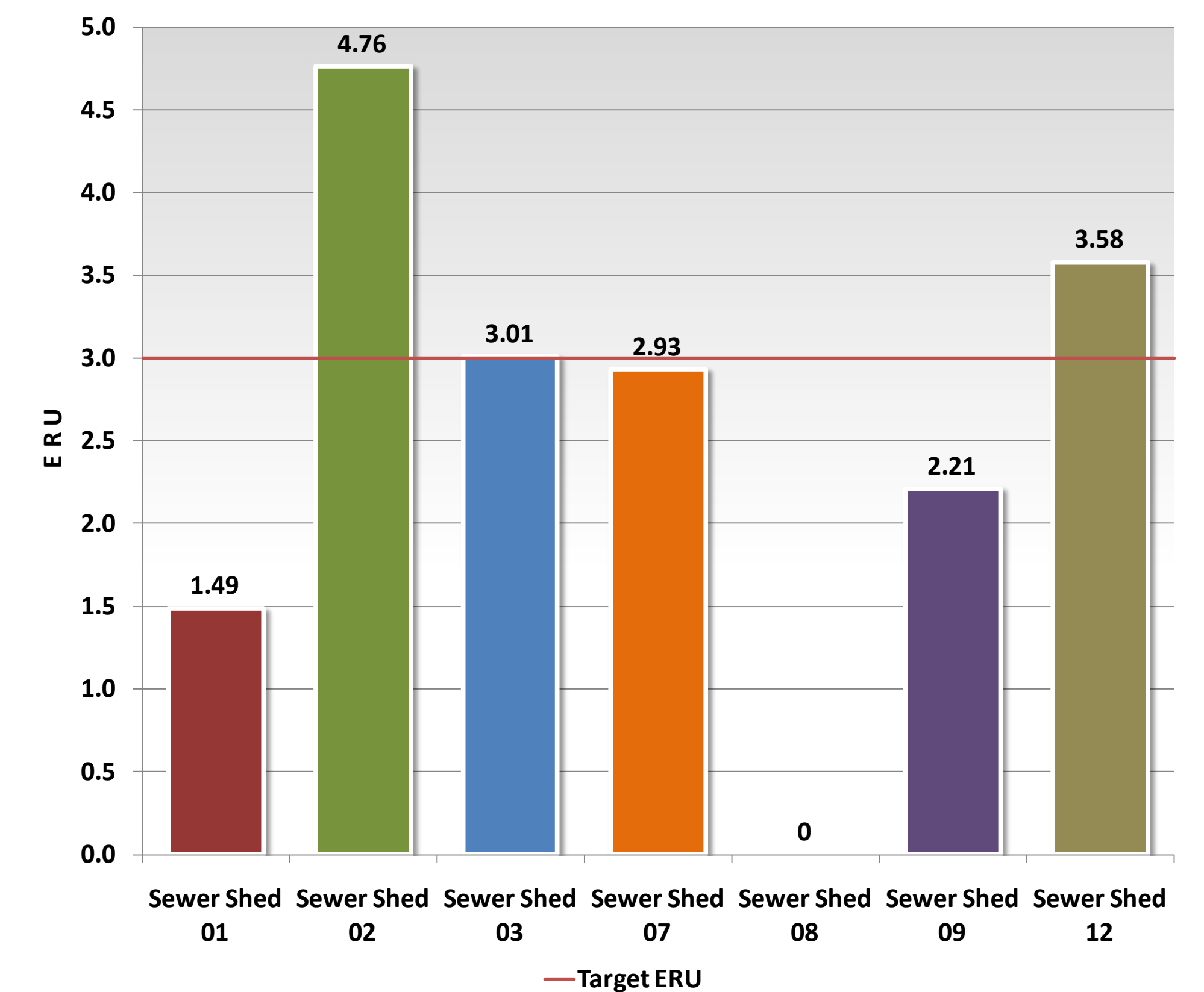
» LEGEND



» STUDY AREA SYMBOLS



» SEWER SHED ERU AVERAGES (EQUIVALENT RESIDENTIAL UNIT)



Notes: The target ERU is the desired density average of residential and commercial development to make installation and maintenance of sewer infrastructure cost effective. Sewer shed 100 is not shown because the majority of this area has already been annexed by the City of Kuna.